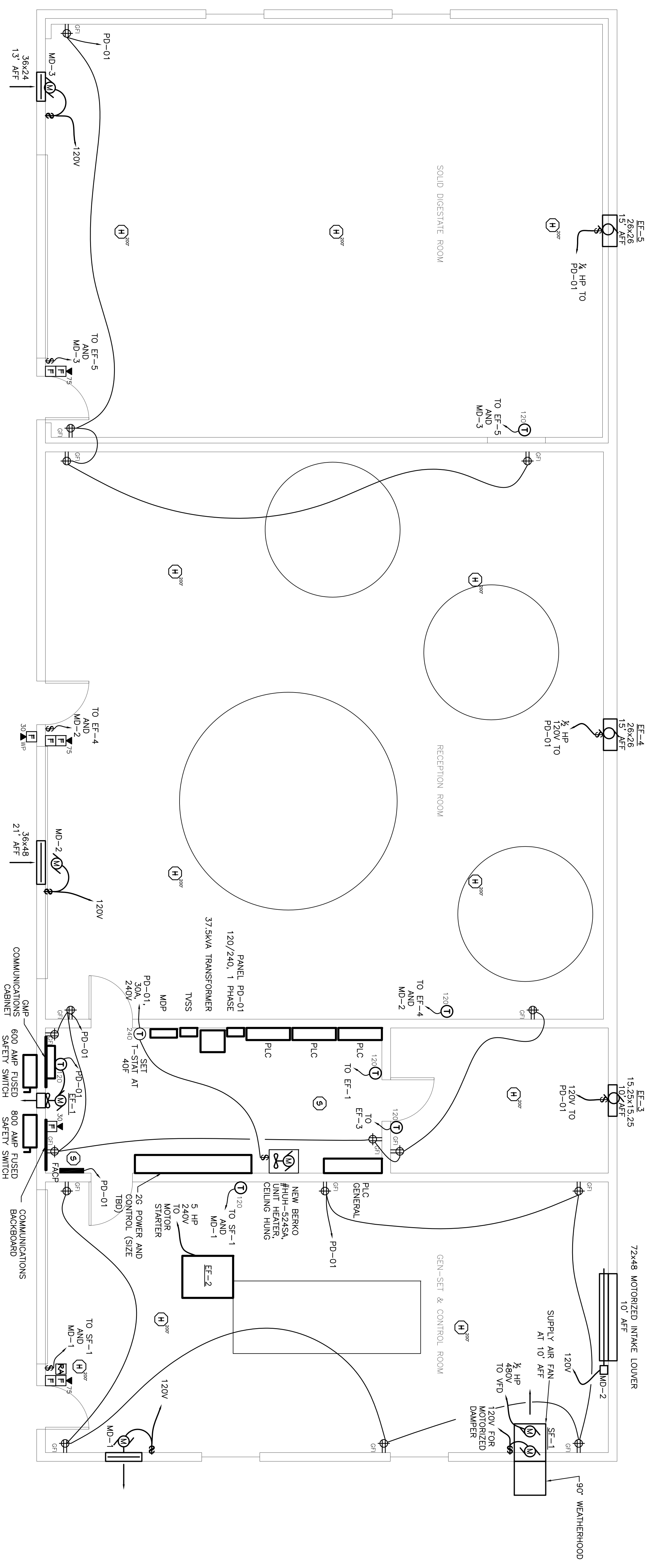


TAG	LOCATION	MANUFACTURER & MODEL NO.	FAN TYPE	FLOW (CFM)	SP (IN)	RPM	BHP	SONS	MOTOR			REMARKS
									HP	VOLTS	PH	
EF-1	ELECTRICAL ROOM	GREENHECK SET-10-440-D-1	DIRECT DRIVE EXHAUST FAN	690	.125	1400		1/2	120	1	60	NOTE 2
EF-2	GENERATOR ROOM	GREENHECK TCB-2-24-50	INLINE CENTRIFUGAL BELT DRIVE	8,500	.75	1725	3	23	240	1	60	
EF-3	HEATING ROOM	GREENHECK SET-10-428-P	DIRECT DRIVE EXHAUST FAN	300	.25	1650	3/8	9.2	120	1	60	NOTE 2
EF-4	RECEPTION ROOM	GREENHECK SBE-2H24	SIDEWALL BELT DRIVE PROPELLER	4000	.25	995	1/2	19.3	120	1	60	
EF-5	SOLID DIGESTATE ROOM	GREENHECK SBE-1H20	SIDEWALL BELT DRIVE PROPELLER	1800	.25	1725	1/2	13.5	120	1	60	
SF-1	GENERATOR ROOM	GREENHECK SPS-2120-5	SIGNAL BELT DRIVE PROPELLER	2,200	.25	920	1/2	15	120	1	60	NOTE 1

REMARKS:  
 1. PROVIDE WEATHERHOOD, WALL HOUSING, YEL. MOTOR COMPATIBLE FOR USE WITH VFD, PREMIUM EFFICIENT MOTOR, AND MOTORIZED DAMPER.  
 2. PROVIDE LINE VOLTAGE THERMOSTAT AND SPEED CONTROL.

TAG	DESCRIPTION
MD-1	30x30 MOTOR OPERATED DAMPER WITH 120VOLT ACTUATOR
MD-2	72x48 MOTOR OPERATED DAMPER WITH 120VOLT ACTUATOR



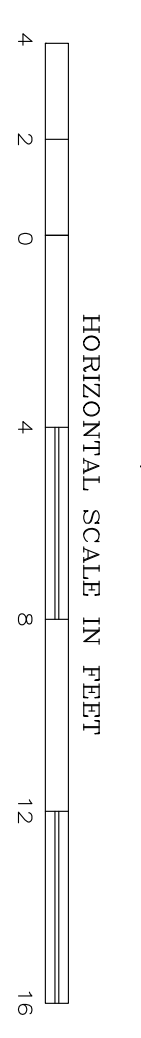
### ELECTRICAL LEGEND

- DUPLEX RECEPTACLE
- DUPLEX RECEPTACLE - COUNTER HEIGHT
- DUPLEX RECEPTACLE - COUNTER HEIGHT, GFCI PROTECTED
- FLUORESCENT LIGHT
- SWITCH - SINGLE POLE, SERVICE SWITCH FOR MOTORS
- SWITCH - 3-WAY
- SWITCH - 4-WAY
- MOTOR
- 120V THERMOSTAT
- ELECTRICAL CONTROFACTOR (DIVISION 16)
- PROVIDED
- FURNISHED AND INSTALLED

### FIRE ALARM LEGEND

- FIRE ALARM HORN/STROBE (NUMBER DENOTES CANDELA)
- FIRE ALARM MANUAL PULL STATION - 48" AFF
- ADDRESSABLE PHOTOVOLTAIC MONITORING MODULES IN THE HEATED SPACE FOR EACH ROOM.
- WEATHERPROOF FIRE ALARM HORN/STROBE
- SYSTEM HEAT DETECTOR, 200 DEGREE FIXED TEMP. NON-ADDRESSABLE, PROVIDE ADDRESSABLE MONITORING MODULES IN THE HEATED SPACE FOR EACH ROOM.
- SYSTEM SMOKE DETECTOR, ADDRESSABLE, FIRE LITE
- REMOTE ANNUNCIATOR PANEL, FIRE LITE #ANN-80
- FIRE ALARM CONTROL PANEL, FIRE LITE PANEL #MS-9050 WITH DACT COMMUNICATIONS (DIALER WITH (2) PHONE LINES TO CELL AND VFD CENTRAL MONITORING, DIALER CAN ALSO BE A SEPARATE SILENT KNIGHT DIALER
- PANEL

### POWER PLAN



### REVISIONS

2/04/14



PROJECT: 12013  
 DATE: MAY 23, 2013  
 DESIGN: EEP  
 DRAWN: DPC  
 CHECKED: EEP  
 APPROVED: EEP

Tel. 802-524-2113  
 Fax. 802-524-9681  
**CROSS**  
 CONSULTING ENGINEERS, P.C.  
 103 Fairfax Rd.  
 St. Albans, Vermont 05478  
 © COPYRIGHT 2013  
 Cross Consulting Engineers, P.C.

**Pearson & Associates**  
 MECHANICAL & ELECTRICAL ENGINEERS  
 P.O. BOX 610 STOWE, VERMONT 05672  
 TEL: (802) 253-9607 FAX: (802) 253-9290  
 EMAIL: alan.p@pearsonandassociates.com

POWER & FIRE ALARM PLAN  
 VIC1-ELE-002-20130521-01

**Bio-Methatech**  
 Montreal, Quebec, Canada  
**New Methane Digester**  
 Vermont Technical College Randolph Center, Vt.

ELECTRICAL  
**E-2.0**  
 SHEET 2 OF 3